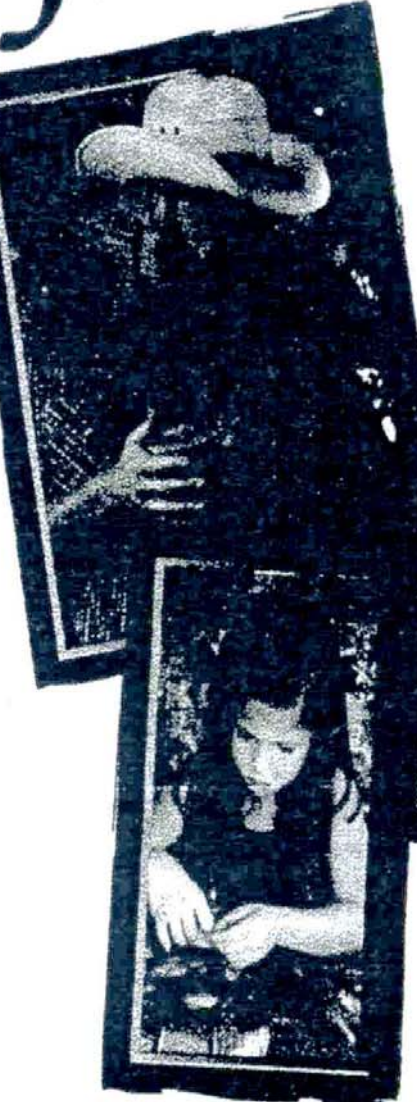


October 2, 3 & 4  
Guthrie, Oklahoma



# BLUEGRASS Festival



## BRING THE WHOLE FAMILY!



CHILDREN'S TENT ACTIVITIES



### Festival Performers...

- |                              |                       |
|------------------------------|-----------------------|
| Mason Williams               | Cedar Ridge           |
| Claire Lynch                 | Brigade               |
| David Munnely Band (Ireland) | Hunt Family Bluegrass |
| Red Wine (Italy)             | Neverly Hillbillies   |
| Frenchy Burke                | High Ground           |
| Gibson Brothers              | Mountain Gypsies      |
| Byron Berline Band           | Edgar Cruz            |
| Barry Patton                 | John McEuen of Nitty  |
| Rockin Acoustic Circus       | Gritty Dirt Band      |
| Red Dirt Rangers             |                       |

*Performers subject to change*

### Activities...

- FREE Children's Activities
- Children under 12 are FREE
- Music Workshops & Vendors
- Youth Musician Competition
- Auction: Instruments, Art & more
- Food to Suit All Tastes
- Random Band Jam
- Play with Bluegrass performers in Sunday's Golf Tournament
- Cottonwood Creek Stage - Open mic - daily signups
- Songwriters' tribute to Bob Childers
- Music merchandise tent



GUTHRIE IS 16 MILES NORTH OF OKLAHOMA CITY ON I-35. I-35 to Hwy. 33 @ exit #157 West

**ABSOLUTELY NO DOGS!**  
No alcohol in stage areas.  
No drugs allowed.  
Designated motorcycle parking only.



**SEND FOR YOUR TICKETS TODAY!**  
Call 405-282-4446 or  
**TOLL FREE 1-877-203-1206**  
Or visit our Web site and purchase your tickets online -  
Just click on **CLICK 'N' PRINT TICKETS.**  
**www.oibf.com**  
OIBF is not responsible for lost tickets or refunds.

**CALL (405) 282-4446 NOW! 1-877-203-1206 TOLL FREE**

### Campground Facilities

The campground is 1st come, serve and will open at noon Saturday, September 27 with 300 RV sites with water and electrical hookups and plenty of tent camping.

- RV FEE - \$12.00/night (Electric)
- Tent Camping (No Electric) - \$7.00/night
- Campsite Vehicle Parking - \$7.00/day

Campground closes at noon Sunday, October 5, 2007